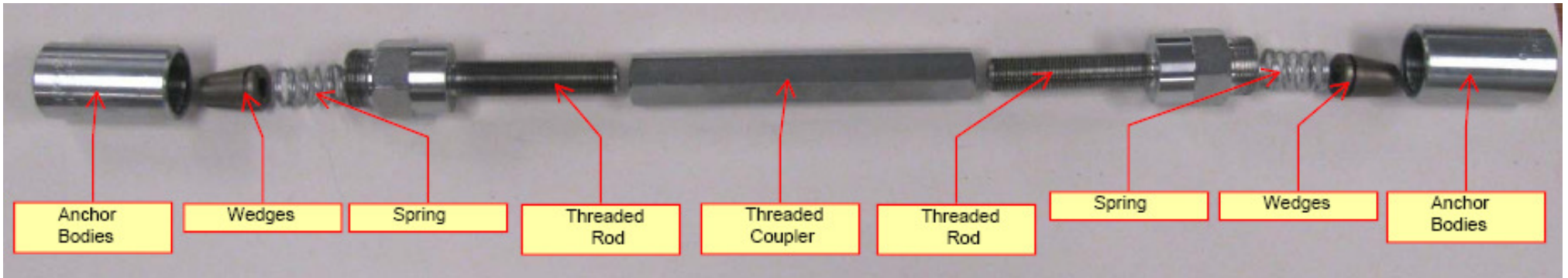


GRABB-IT Cable Splice Installation Instructions

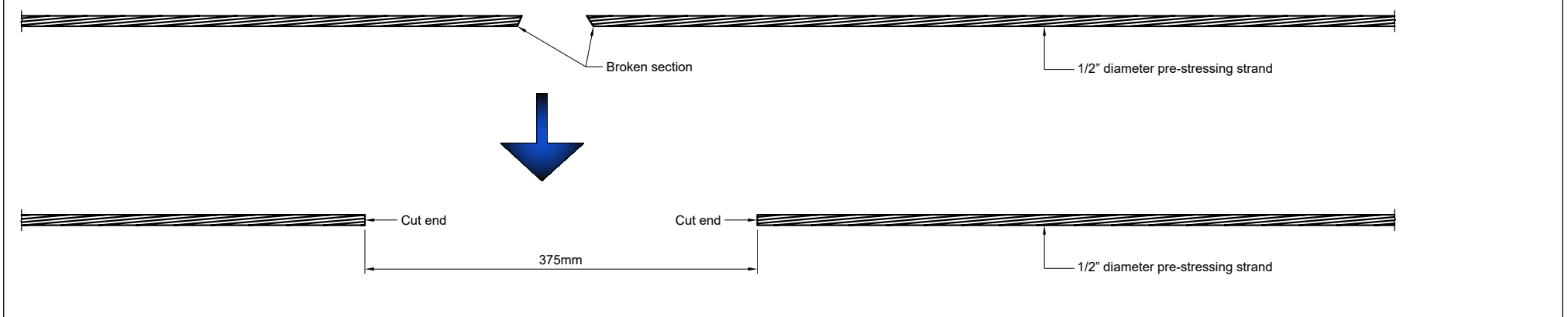
- Required Equipment:**
- 1) GRABB-IT Cable Splice assembly and Chuck Splice (if required).
 - 2) One 1" torque wrench.
 - 3) Two 1-1/2" flat wrenches.
 - 4) Thread lubrication provided or recommended by manufacturer.
 - 5) Marking adhesive tape.
 - 6) Cable cutting device.
 - 7) Measuring tape.

PSI would like to acknowledge that these installation instructions were prepared by the Ministry of Transportation, West Region Structural Section, London, Ontario.

Photo 1: GRABB-IT overview

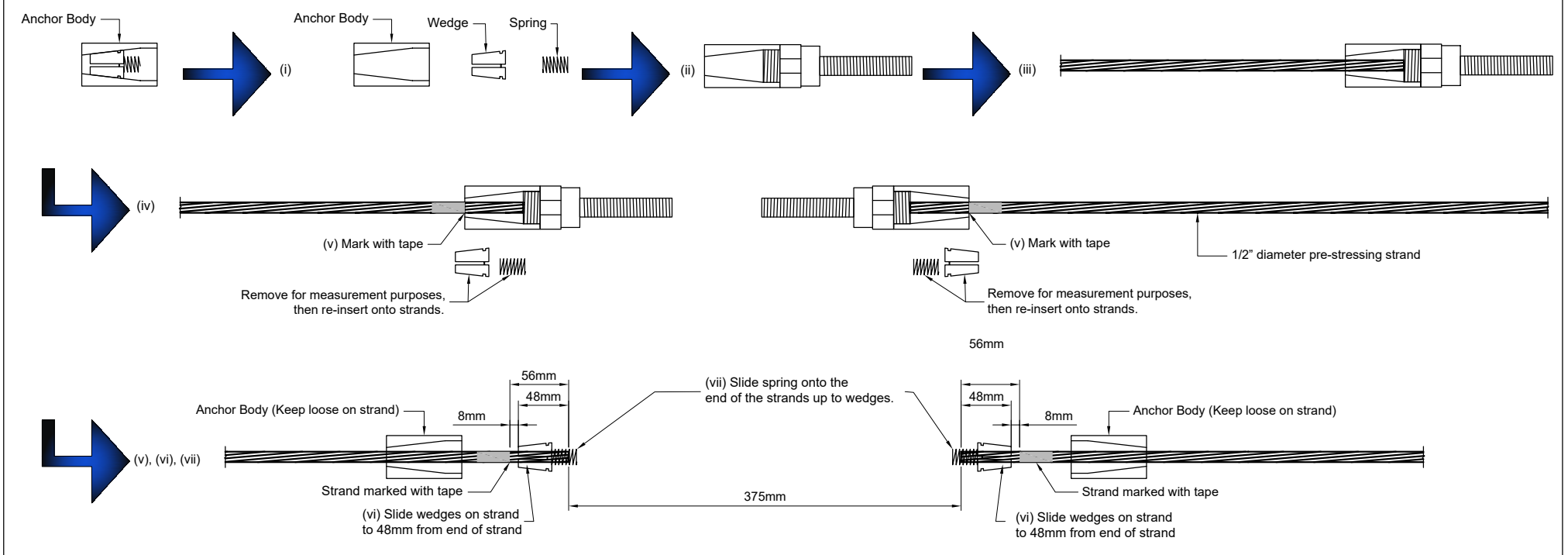


STEP 1: Cut 375mm opening between broken strands.



STEP 2: Measure & mark strands for wedge placement

- Instruction:
- (i) Remove Wedges and Springs from Anchor Bodies.
 - (ii) Fully screw Anchor Bodies onto Threaded Rods.
 - (iii) Push strand through Anchor Bodies until the strands touch the end of the Threaded Rod.
 - (iv) Mark strands at end of anchor Bodies with marking tape (56mm from end of strand).
 - (v) Un-screw Anchor Bodies from Threaded Rods (keep Anchor Bodies loose on strands).
 - (vi) Slide Wedges onto strands to 48mm from end of strands (8mm from tape mark).
 - (vii) Slide Spring onto the end of strands.



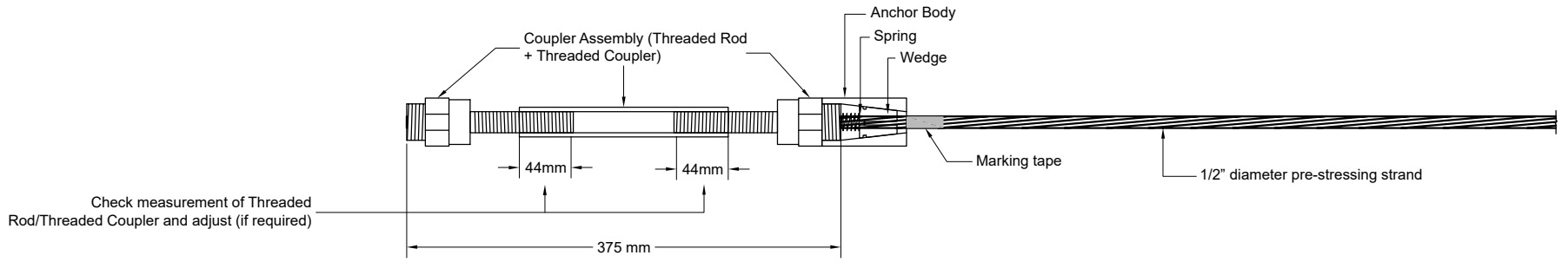
STEP 3: Assembling GRABB-IT

- Set Threaded Coupler onto Threaded Rods, engage each side 44mm.
- Lubricate Threaded Rod and Threaded Coupler using manufacturer supplied grease.



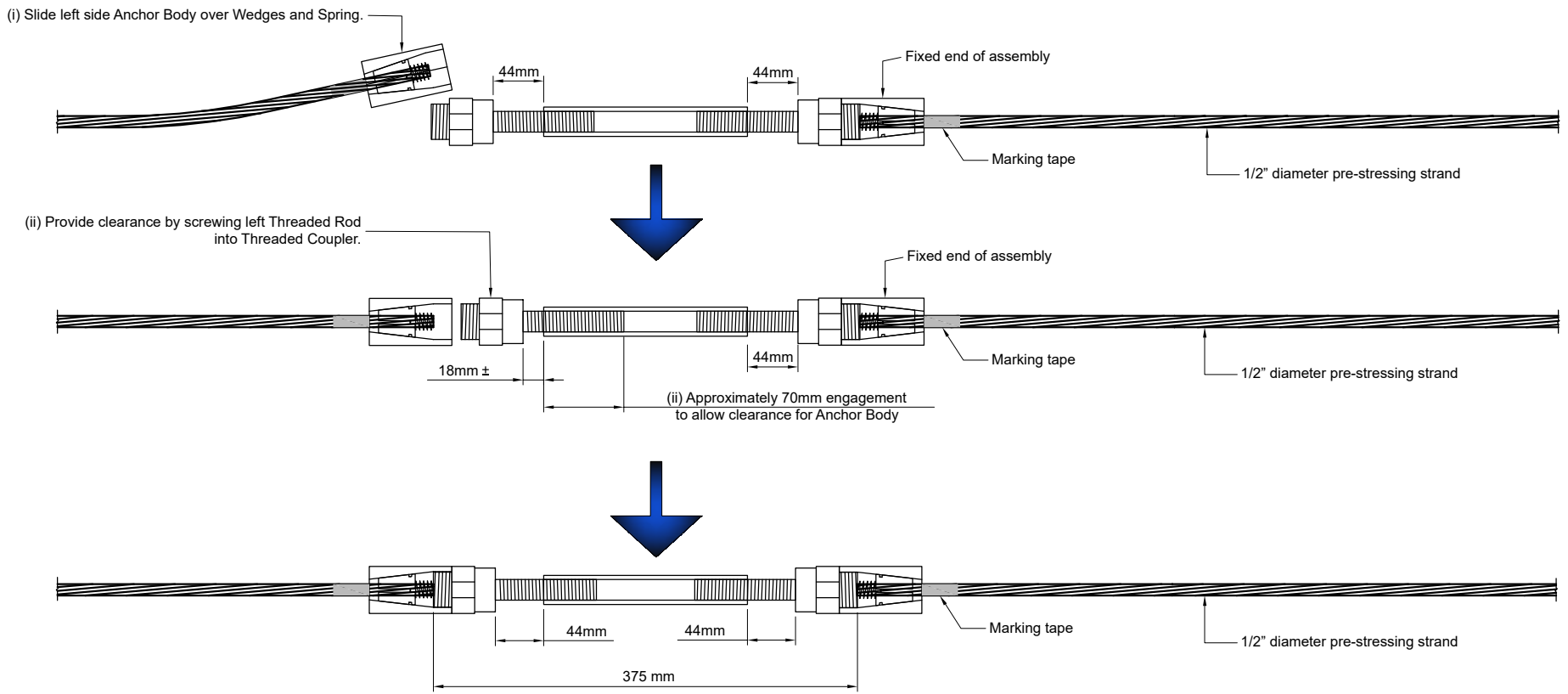
STEP 4: Connecting Right end of strand.

- Pull loose Anchor Body over the Wedge and Spring.
- Screw Anchor Body to the coupler assembly (Threaded Rods + Threaded Coupler) and tighten snug tight. Take care not to move the wedge when connecting.
- Check measurements of Threaded Rod engagement on Threaded Coupler.



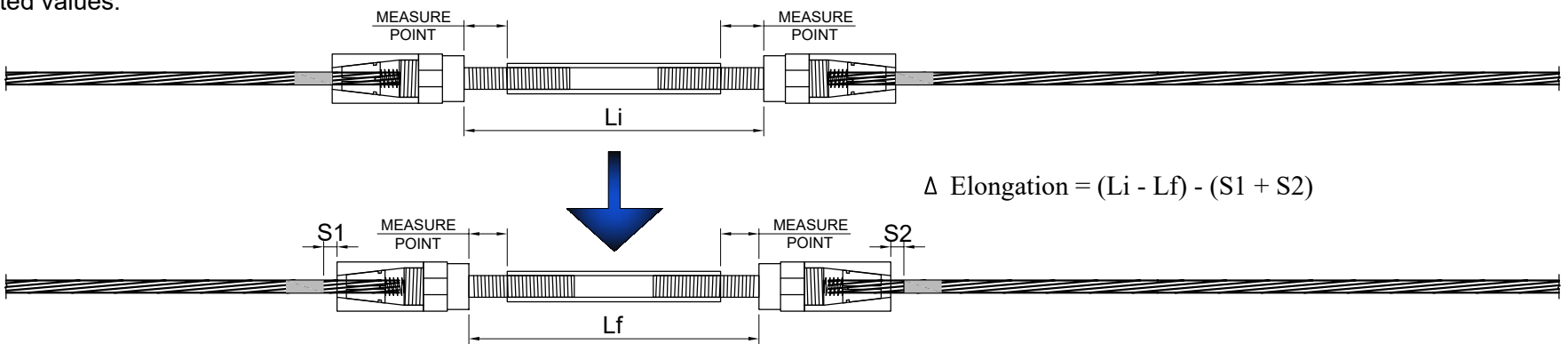
STEP 5: Connecting other end if strands.

- Slide the left side of the Anchor Body over the Wedges and Spring.
- Hold the Threaded Coupler and screw the left side of the Threaded Rod into the Threaded Coupler to give clearance for the left end Anchor Body (approximately 60mm engaged into Threaded Coupler).
- Reverse the Threaded Rod into the Anchor Body until touching strand while holding threaded coupler still and tighten snug tight by turning Anchor Body.
- Check measurement of Threaded Rod on Threaded Coupler-both sides ($44 \pm$ mm each side)



STEP 6:

- Calculate elongation of 1/2" diameter strand during tensioning (assume 6mm slip for each wedge).
- Calculate torque value for GRABB-IT coupler using manufacturer's Tables.
- Hold Threaded Rod nuts with 1-1/2" wrenches at each end.
- Set Anchor Bodies to snug tight condition using conventional wrenches on Anchor Bodies and torque wrench on Threaded Coupler.
- Tighten Threaded Coupler nut with torque wrench to specified torque values
 - Start at 25 ft-lbs and increase torques in 25 ft-lbs increments.
- Measure exposed length of Threaded Rods (**measure points**) each side of the Threaded Coupler to determine elongations, as torque is increased to calculated values.



Multiple Strand Repair:

- Ensure the GRABB-IT's have 50mm clearance.
- Use a Chuck Splice and new strand piece to stagger GRABB-IT assemblies as shown.

